

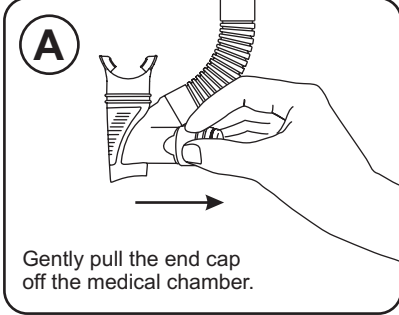
Instructions for using your MediDive snorkel

Warning: The use of this product will not prevent you from having an asthma attack but ensures that your medication is available in case you do. If you have any concerns regarding the effect of snorkelling on your asthma condition you should consult your GP.

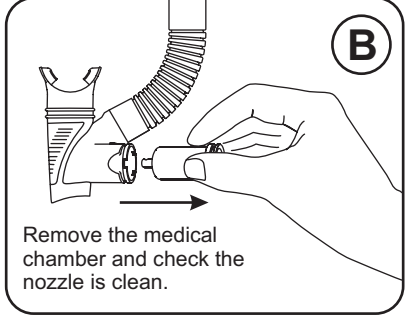
Prior to Use

- Check you have sufficient medication in your normal medication canister.
- Test the canister works in your puffer.
- Check the expiry date on your medication.
- Make sure you have read and understood these instructions.

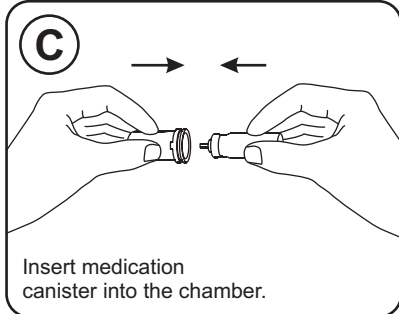
Installing your Medication Canister



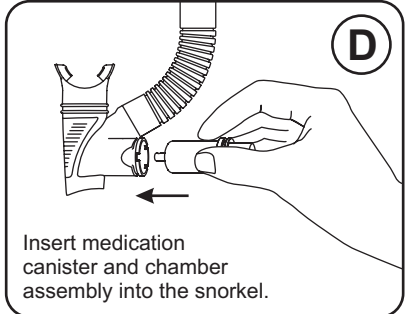
Gently pull the end cap off the medical chamber.



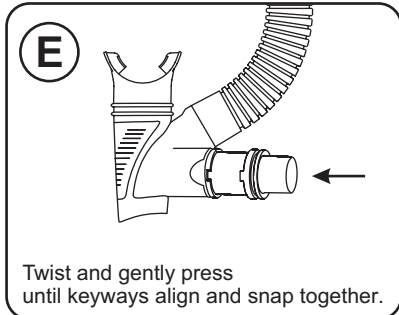
Remove the medical chamber and check the nozzle is clean.



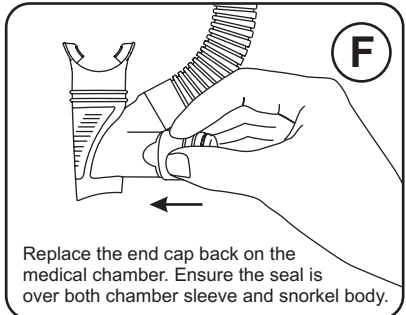
Insert medication canister into the chamber.



Insert medication canister and chamber assembly into the snorkel.

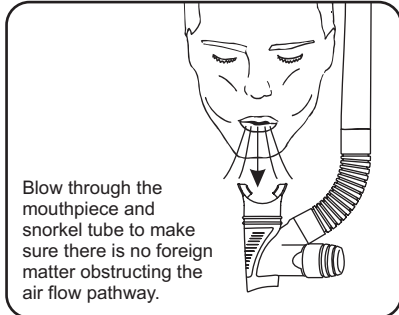


Twist and gently press until keyways align and snap together.

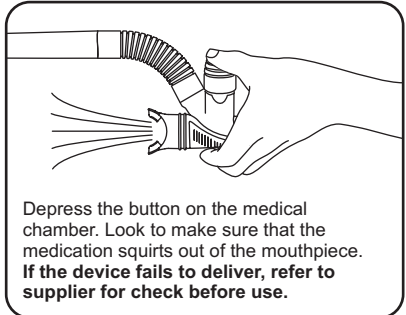


Replace the end cap back on the medical chamber. Ensure the seal is over both chamber sleeve and snorkel body.

Testing the MediDive Snorkel Before Use



Blow through the mouthpiece and snorkel tube to make sure there is no foreign matter obstructing the air flow pathway.



Depress the button on the medical chamber. Look to make sure that the medication squirts out of the mouthpiece. **If the device fails to deliver, refer to supplier for check before use.**

Wearing the MediDive Snorkel

!Always attach the snorkel to the left side of your mask.



Suitable Snorkelling Conditions

- Never snorkel alone. Always have a 'buddy' with you at all times in the water.
- Be sure to snorkel within the limits of you and your buddy.
- Check there is little or no current as snorkelling in a current can lead to overexertion, resulting in shortness of breath, anxiety and stress.
- Check the temperature of the water, if the water is cold you are advised to wear a wetsuit as prolonged exposure to cold may aggravate your condition.

During Snorkelling

- Move slowly and deliberately. Do not overexert yourself.
- Stop and rest if you become tired. Note: if floating face down while resting, be sure to raise your head from time and allow people who may be watching from a distance know you are OK and check for boat traffic etc.
- Stay in reach of shore or boat and always snorkel within yours & your buddies limits.
- If you become cold, exit the water, dry off and get warm.

If you experience the onset of asthma symptoms

Establish positive buoyancy. If you are wearing a weight belt you may need to drop it. If you are wearing a buoyancy control device (BCD) inflate it to establish buoyancy.

NOTE: Over inflation may constrict chest and add to breathing difficulty.

1

!Do Not attempt to administer medication whilst submerged.

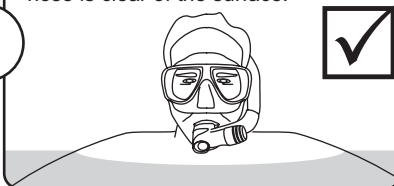
Inhaling whilst the snorkel is completely submerged will result in flooding & breathing a mouth full of water.

Do Not attempt to administer medication whilst submerged.



2

Position yourself so you are vertical in the water and the snorkel breather hose is clear of the surface.



Make sure the snorkel is clear of excess water before administering medication. You can do this by taking it out of your mouth and shaking it (Picture A), or purging by blowing into the mouthpiece (Picture B).

A



3

B

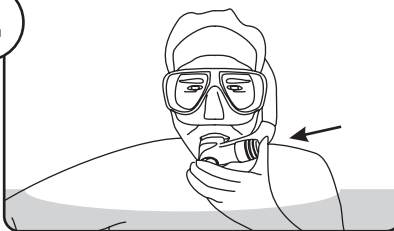


Shake the snorkel well before each use to ensure the medication is mixed. Test the snorkel first by depressing the button. This will also ensure any foreign material that may be present is cleared away before use.



4

Hold snorkel securely, depress button on medical chamber while inhaling through the mouthpiece. **Do not bite down on the mouthpiece, use as you would a normal puffer.**



Signal for help, stay calm. **Repeat as needed, remembering to follow steps 3 & 4.**



5

After an Asthma Attack

Seek medical advice from your physician if you suffer from an asthma attack while snorkelling.

Cleaning the MediDive Snorkel

- Remove canister from your snorkel by gently pulling the end cap off the medical chamber and pulling out your canister.
- Rinse snorkel thoroughly in fresh water.
- Place on a flat surface away from direct sunlight to dry.

- Once the snorkel is completely dry, check the spray nozzle at the end of the medical chamber is free from any salt build up or debris that may not have been properly washed off. You may blow through this hole to free any salt or debris, re-wash and dry thoroughly.
- Re-assemble snorkel and store in a dry place, away from direct sunlight.

General Precautions

- This snorkel **should not be used when SCUBA diving.**
- This snorkel is suitable only for: **Ventolin®** inhaler canister or a **generic equivalent of equal size (Refer to the canister manufacturer directions for operation and use)**. No other size of canister should be used in conjunction with the device.
- Follow canister manufacturer directions on operating temperatures.
- Always check operation before proceeding with snorkelling.

- The manufacturer directions should be followed when disposing of any expired or used medication canister.
- Rinse snorkel thoroughly in fresh water between different users.
- Consider your previously encountered reactions and how they may impair your abilities in a snorkelling environment.
- Always be sure to check the device for any degraded or failing parts and replace them before use.
- Always be sure to clean and safely store the snorkel after each use.